



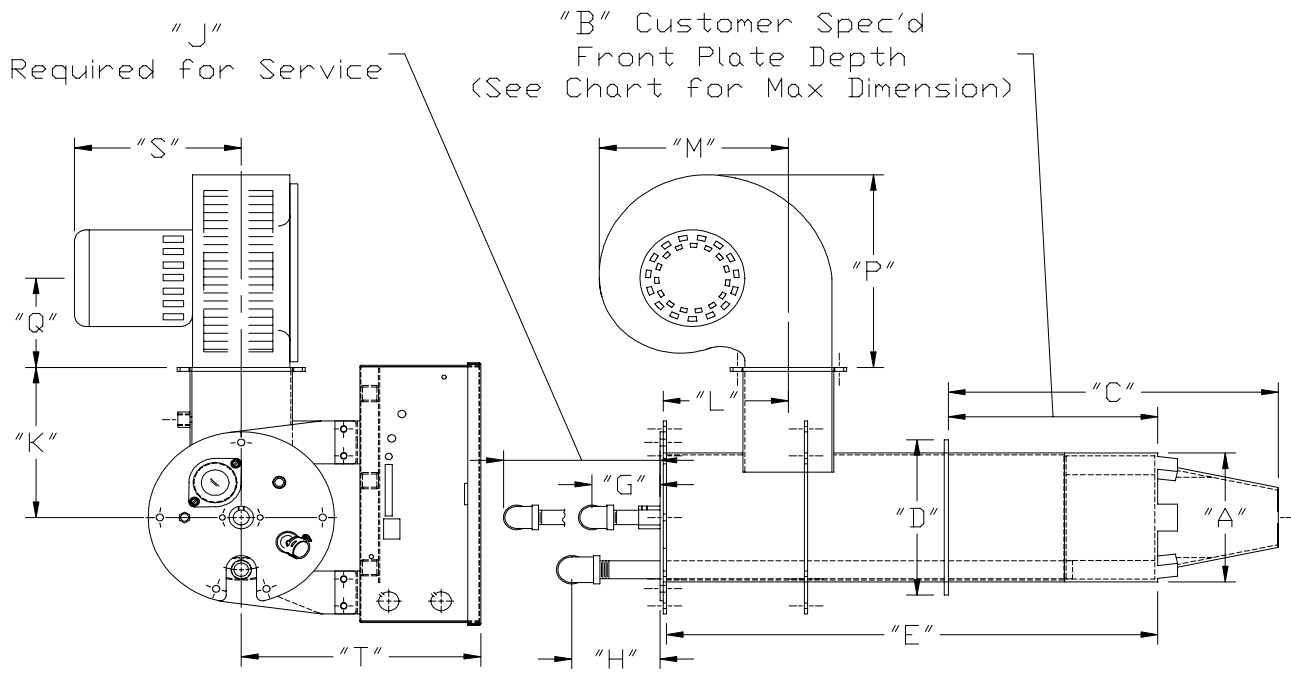
# Specifications and Capacities

BASIC BURNER MODEL NO.	MAXIMUM FIRING RATE					BURNER BLOWER MOTOR 3450 RPM HP
	COMBUSTION CHAMBER PRESSURE					
	DRAFT -.05" W.C.  NATURAL GAS	LOW PRESSURE		HIGH PRESSURE		
		PRESSURE INCHES W.C.	NATURAL GAS BTU/HR 1,000's	PRESSURE INCHES W.C.	NATURAL GAS BTU/HR 1,000's	
	BTU/HR 1,000's	INCHES W.C.	BTU/HR 1,000's	INCHES W.C.	BTU/HR 1,000's	
GZ6-G-03	400	0.5" w.c.	400	---	---	1/3
GZ6.1-G-05	520	0.5" w.c.	490	---	---	1/2
GZ7.9-G-05	650	0.5" w.c.	509	---	---	1/2
GZ7-G-05	950	0.5" w.c.	896	1.25" w.c.	616	1/2
GZ7.1-G-07	1,050	0.5" w.c.	896	1.25" w.c.	712	3/4
GZ8-G-03	950	0.5" w.c.	741	---	---	1/3
GZ8.4-G-05	1,260	0.5" w.c.	1,188	1.5" w.c.	857	1/2
GZ8.5-G-07	1,550	0.5" w.c.	1,484	1.5" w.c.	1,126	3/4

**NOTE:** Capacities shown are based on firing Natural Gas with a heating value of 1,000 btu/cf and a specific gravity of 0.60 at an elevation of 2,000 feet above sea level. Capacity will be reduced 4% for each additional 1,000 feet of elevation. Standard motor voltage is 120/60/1.

# Dimensions

MODEL	A	B	C	D	E	G	H	J	K	L	M	P	Q	S	T
GZ6	6.00	4.00-9.00	B+5.19	11.00	21.12	2.50	3.50	22.00	7.00	5.38	8.07	8.88	4.10	7.22	10.30
GZ6 x	6.00	9.00-20.00	B+5.19	11.00	32.12	2.50	3.50	33.00	7.00	5.38	8.07	8.88	4.10	7.22	10.30
GZ6.1	6.00	4.00-9.00	B+5.19	11.00	21.12	2.50	3.50	22.00	7.00	5.38	12.12	13.62	6.75	11.00	10.30
GZ6.1 x	6.00	9.00-20.00	B+5.19	11.00	32.12	2.50	3.50	33.00	7.00	5.38	12.12	13.62	6.75	11.00	10.30
GZ7.9	7.00	4.00-9.00	B+6.38	11.00	21.12	2.50	3.50	22.00	10.50	5.12	8.96	10.33	4.77	8.38	11.05
GZ7.9 x	7.00	9.00-16.00	B+6.38	11.00	28.12	2.50	3.50	29.00	10.50	5.12	8.96	10.33	4.77	8.38	11.05
GZ7	7.00	4.00-9.00	B+6.38	11.00	21.12	2.50	3.50	22.00	10.50	5.12	12.12	13.62	6.75	11.00	11.05
GZ7 x	7.00	9.00-16.00	B+6.38	11.00	28.12	2.50	3.50	29.00	10.50	5.12	12.12	13.62	6.75	11.00	11.05
GZ7.1	7.00	4.00-9.00	B+6.38	11.00	21.12	2.50	3.50	22.00	10.50	5.12	13.88	15.62	7.62	11.00	11.05
GZ7.1 x	7.00	9.00-16.00	B+6.38	11.00	28.12	2.50	3.50	29.00	10.50	5.12	13.88	15.62	7.62	11.00	11.05
GZ8	8.00	4.00-9.00	B+7.80	11.00	21.12	2.50	3.50	22.00	10.50	5.12	8.96	10.33	4.77	8.38	11.55
GZ8 x	8.00	9.00-20.00	B+7.80	11.00	32.12	2.50	3.50	33.00	10.50	5.12	8.96	10.33	4.77	8.38	11.55
GZ8.4	8.00	4.00-9.00	B+7.80	11.00	21.12	2.50	3.50	22.00	10.50	5.12	12.12	13.62	6.75	11.00	11.55
GZ8.4 x	8.00	9.00-20.00	B+7.80	11.00	32.12	2.50	3.50	33.00	10.50	5.12	12.12	13.62	6.75	11.00	11.55
GZ8.5	8.00	4.00-9.00	B+7.80	11.00	21.12	2.50	3.50	22.00	10.50	5.12	13.88	15.62	7.62	11.00	11.55
GZ8.5 x	8.00	9.00-20.00	B+7.80	11.00	32.12	2.50	3.50	33.00	10.50	5.12	13.88	15.62	7.62	11.00	11.55



**NOTE:** Dimensions shown are typical and subject to change without notice.

NOTE:

DIMENSIONS SHOWN ARE TYPICAL AND SUBJECT TO CHANGE WITHOUT NOTICE.

## STANDARD EQUIPMENT

SINGLE FUEL BURNERS		FUEL CONTROL SYSTEMS	
		ON-OFF FIXED AIR & FUEL	ON-OFF or HI-LOW LOW FIRE START
FUEL FIRING RATE SYSTEM		GAS BZ	GAS HZ
BURNER MODEL		GZ	GZ <sup>1</sup>
GENERAL	Blower Motor and Fan	X	X
	Air Inlet Register and Air Inlet Guard	X	X
	Flame Detector (UV Scanner)	X	X
	Air Flow Safety Switch	X	X
CONTROL CABINET	Combustion Flame Safeguard	X	X
	On-Off Switch	X	X
	Motor Contactor or Starter	X	X
AIR-FUEL CONTROL	Fixed Air and Fuel	X	
	Low Fire Start, Motorized Gas Valve		X
GAS CONTROL	Ignition Transformer	X	X
	Pilot Solenoid Valve	X	X
	Pilot Shut-off Cock		X
	Safety Test Cock		X
	Gas Orifices		X

<sup>1</sup> GZ6 Burners not available with HZ systems.